

## X5600

X5600 is a small precise micro-focus X-ray inspection equipment, suitable for R&D enterprise, laboratories, quality inspection rooms etc., It is the first choice for X-ray inspection of microelectronics and electromechanical products.

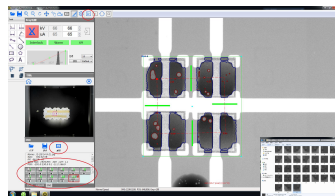
### Equipment Parameters

Dimension	L850mm×W1000mm×H1700mm
Input Power	220V 10A/110V 15A 50-60HZ
Max Sample Size	280mm×320mm
OS	IPC WIN7/ WIN10 64 bit
N.W.	About 750KG



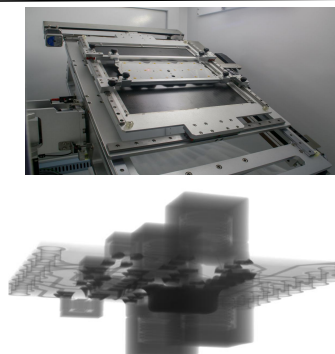
### CNC Automatic Inspection

- CNC automatic inspection
- X6600/X5600 can run CNC inspection based on users setting
- Images and reports regenerated automatically



### Tilt photo/rotate photo function

- Tilt inspection function
- X5600/X6600 support multi-angle defect inspection by tilt function
- 360° rotation camera with no blind spots



### Advantages

- ◆ Compact and easy to install and operate
- ◆ Suitable for inter alia BGA/CSP, Wafer, SOP/QFN, SMT and PTU packaging, and Sensors
- ◆ High quality image obtained by high-resolution design
- ◆ Fast location IR auto-navigation and positioning
- ◆ CNC automatic inspection mode for multi-point array
- ◆ User-friendly software operation, low training cost
- ◆ Long lifespan : resulting in positive ROI and COO

### X-ray Tube Spec

X-ray TubeType	Reflective sealed micro-focus ray source
Tube Voltage	40-90KV
Tube Current	10-200 μA
Max Output Power	8 W
Micro Focus Size	15μm

### FPD Spec

Detector Type	Amorphous silicon flat panel detector
Pixel Matrix	1536×1536
FOV	130mm×130mm
Resolution	5.8Lp/mm
Image frame rate (1×1)	20fps
AD conversion digits	16bit

### Dimensions

